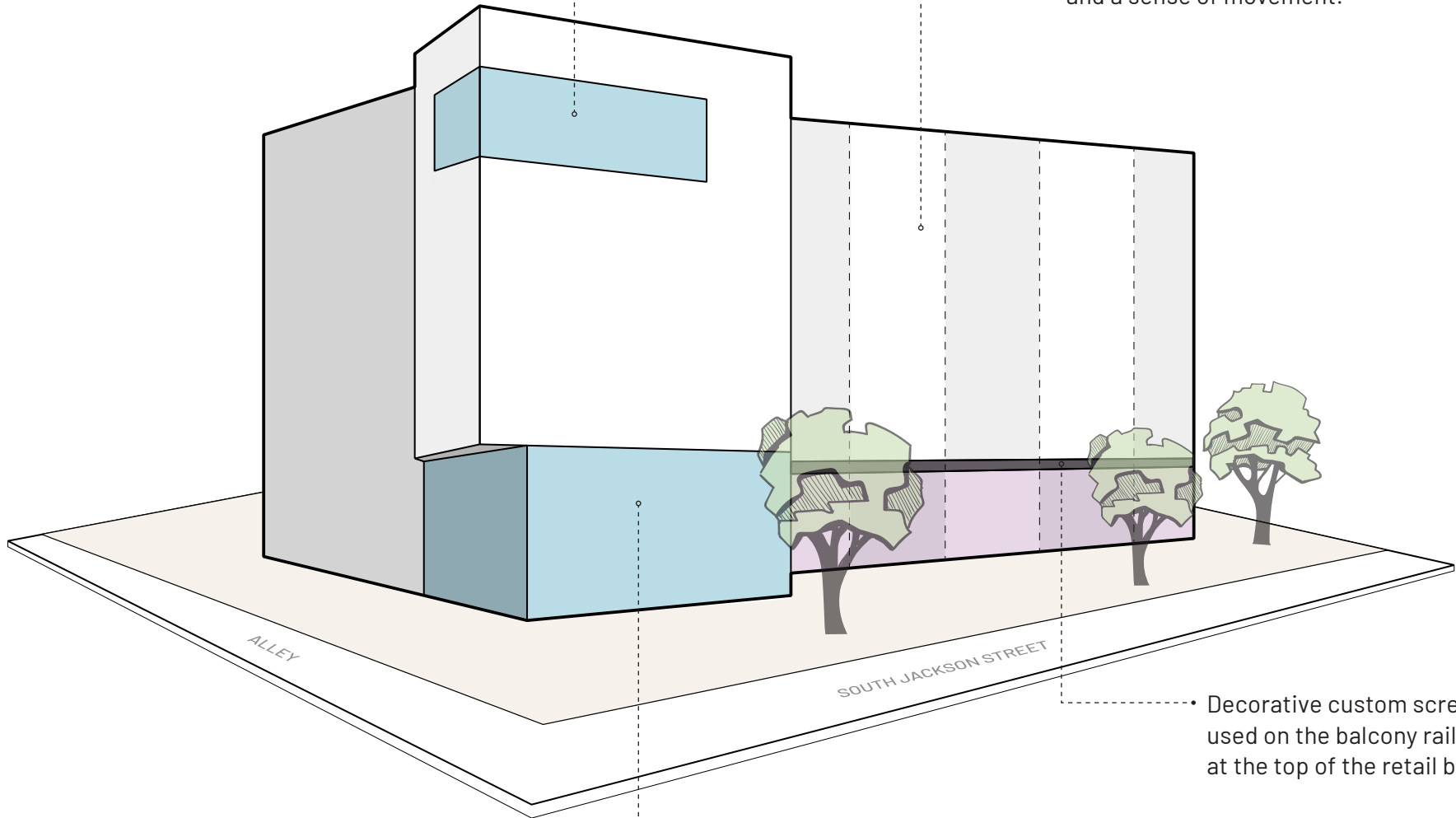


Open air resident amenity space, designed to represent a lantern, was inspired by upper story social clubs throughout the International District.

The project's design was inspired by the "tube houses"—narrow residential buildings distinctive for their variety of window styles and balconies. Cohesiveness is achieved by using a "weaving" pattern to achieve variety and a sense of movement.



The ground floor includes commercial office space for the Low Income Housing Institute (LIHI), as well as small-scale retail spaces suitable for local businesses.

Decorative custom screens are used on the balcony railings and at the top of the retail bays.